

Ted Wragg Trust Curriculum Map: West Exe Baccalaureate



Potential future careers in linked to the WEB

Lawyer, environmentalist, manager, teacher, police officer, medical professional.

The West Exe Baccalaureate (WEB) is a specially designed course covering a number of strands, all of which contribute to the holistic development of students. The WEB provides students with knowledge in a wide range of areas from the legal and political systems through issues such as prejudice, abortion and capital punishment to personal safety such as online safety and healthy relationships.

A number of modules within WEB specifically focus on developing students' skills. For example, the Personal Skills modules help students understand key employability skills such as communication, teamwork and leadership and how to develop these. Students also study modules in Work Skills, which includes how to write a C.V. and Financial Skills which covers topics such as budgeting and borrowing.

In terms of cultural capital, the WEB includes modules which help students understand their place within the world. Some of these are centred in Religious Education and develop students' knowledge and understanding of the beliefs and practices of followers of a number of major world religions. Other modules, such as Human Rights and British Values, and Global Issues, help students recognise and develop their role as global citizens.

Literacy is supported in a number of ways. For example, key word lists are being developed for each module. These key words and concepts are also revisited through 'Do Now' tasks.

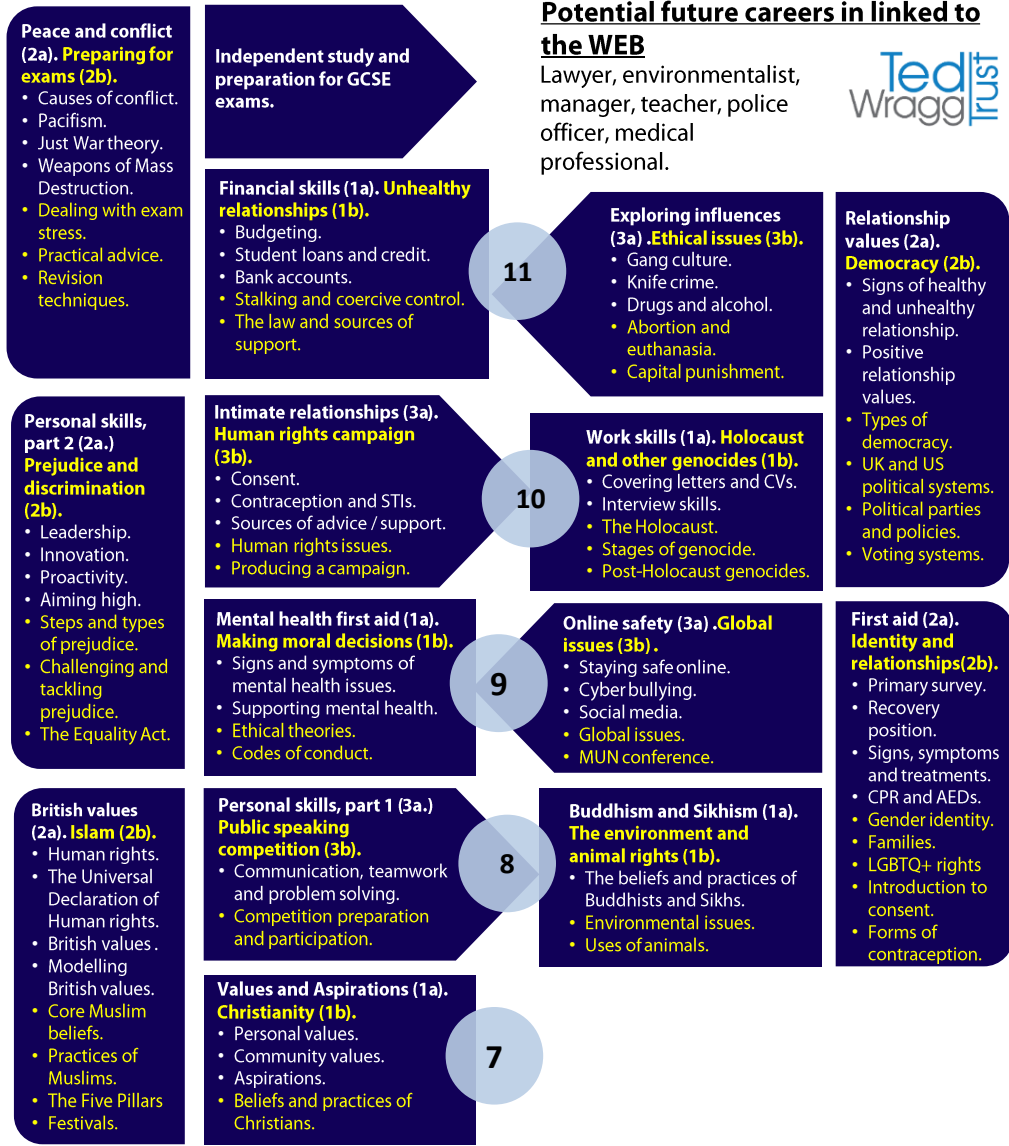
The WEB contains five strands: Religious Education; Citizenship; Relationships and Sex Education, (RSE); Personal, Social and Health Education, (PSHE) and life skills. The curriculum is designed to include these strands in each year of the course. In terms of which modules are included, and when, a number of sources of guidance are used, for example, the PSHE Association's Programme of Study and the National Curriculum guidance on Citizenship.

Retrieval practice takes place in lessons through the 'Do Now' tasks which form the silent starter at the start of each lesson, and the exit routine questions which are designed to reinforce the learning and check that the learning objectives have been achieved.

The WEB covers a wide range of topics, as can be seen right. This is delivered by means of two one-hour lessons per week in Years 7 and 8 and one one-hour lesson per week in Years 9 and 10. A variety of approaches are being developed to deliver the Year 11 content.

The topics chosen are those which is felt have the greatest benefit for West Exe students to equip them with the knowledge, understanding and skills that they need to be well-informed and capable 21st century citizens. The WEB model has been adopted by other schools who may have adapted some of the modules to best meet the needs of their students.

Spiral learning is used, particularly within the RSE and PSHE strands. For example the Year 9 Mental health first aid module builds on the Year 7 Healthy body, healthy mind module. The Year 9 Prejudice and Discrimination module feeds into the Year 10 The Holocaust and other genocides one.



Key concepts

